



APARTHOTEL  
**NATURA**  
RESORT

Building 8





## Luxury Aparthotel with Swimming Pool and SPA

Luxury aparthotels are the most sought-after accommodation option in tourist destinations.

Real estate market research consistently shows that high-end properties lead in popularity thanks to the exclusive amenities included in the price of stay.

Among the top-rated features is a modern SPA zone, significantly increasing the occupancy rate and ensuring stable income from your investment throughout the year.

### Catering to Muslim Guests

We are proud to welcome guests from all over the world and have ensured that our facilities meet the needs of Muslim travelers:

Our restaurant offers special halal meals, prepared in accordance with Islamic dietary requirements.

We also provide a dedicated prayer room on-site, offering a peaceful space for daily prayers.

Our resort offers a wide range of facilities, including a restaurant, café, mini golf course, outdoor gym, indoor and outdoor playgrounds, SPA zone with sauna, jacuzzi, a modern glass-walled swimming pool, and many other conveniences.







## Relax and earn money with Tatra Style



## Prime Location, Exceptional Investment



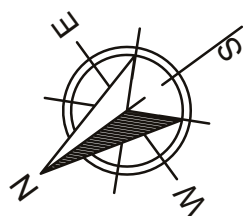
In short-term rental markets, location is key. Our aparthotels are set in a prime area by the picturesque Lake Czorsztyn, with breathtaking views of the Tatra Mountains.

This innovative development is located in Kluszkowce, a charming lakeside town in southern Poland.

All apartments are designed with short-term rental in mind, providing your guests with a high level of comfort and you with steady returns on your investment.







## LEVEL 1

### LEGEND:

- Studio
- 1 Bedroom
- 2 Bedrooms
- 2 Bedroom+ bed
- Penthouse

Apartment	usable area	net area
	30,6	30,6
	37,54	37,54
	34,06	34,06
	24,33	24,33
	45,34	45,34
	28,4	28,4
	33,62	33,62
	28,48	28,48
	45,34	45,34
	24,33	24,33
	34,06	34,06
	37,54	37,54
	30,47	30,47
SUM	434,11	434,11

## Exclusive Lakefront Investment in the Tatra Mountains

This is the latest high-standard aparthotel project by Tatra Style, a trusted local developer.

The building features modern, comfortable apartments for sale, ranging in size from 17.6 m<sup>2</sup> to 99.7 m<sup>2</sup>.

Each unit includes:

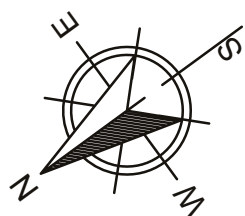
- A fully equipped kitchenette
- A bedroom
- A spacious living area
- A bathroom
- A private balcony or terrace

Additional on-site amenities include:

- Indoor swimming pool
- SPA & wellness zone
- Gourmet restaurant
- Bowling alley
- Reception desk
- Underground parking
- Café
- And many more

Each apartment is finished to exceptionally high standards, ready for immediate use or rental.





## LEVEL 2

### LEGEND:

- Studio
- 1 Bedroom
- 2 Bedrooms
- 2 Bedrooms + bed
- Penthouse

Apartment	useable area	net area
201	37,72	37,72
202	37,45	37,45
203	33,96	33,96
204	24,19	24,19
205	45,26	45,26
206	28,23	28,23
207	33,62	33,62
208	28,31	28,31
209	45,26	45,26
210	24,08	24,08
211	33,96	33,96
212	37,5	37,5
214	37,75	37,75
SUM	447,29	447,29

## Reliable Property Management

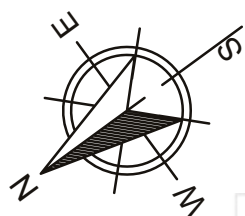
The entire property is managed by a single, experienced operator, ensuring the aparthotel functions like a premium hotel—with a reception desk, SPA, pool, and guest services—instead of a typical apartment block.

This management model ensures maximum occupancy throughout the year. Additionally, the operator provides professional marketing and promotion for the entire resort —far more effective than advertising individual apartments.

All rental operations are handled by the operator, who charges no fixed fees—only a commission based on actual profit, aligning their interests directly with yours.







## LEVEL 3

### LEGEND:

- Studio
- 1 Bedroom
- 2 Bedrooms
- 2 Bedrooms + bed
- Penthouse

Apartment	useable area	net area
301	34,65	37,57
302	35,86	37,49
303	33,92	33,92
304	24,13	24,13
305	42,9	45,34
306	25,49	28,01
307	30,56	33,62
308	25,64	28,15
309	43,95	45,18
310	24,13	24,13
311	33,92	33,92
312	35,82	37,45
314	34,65	37,57
SUM	425,47	446,31

## Earn from Your Investment

Our apartments are designed with modern architectural solutions, featuring large windows and smart layouts ideal for short-term rental.

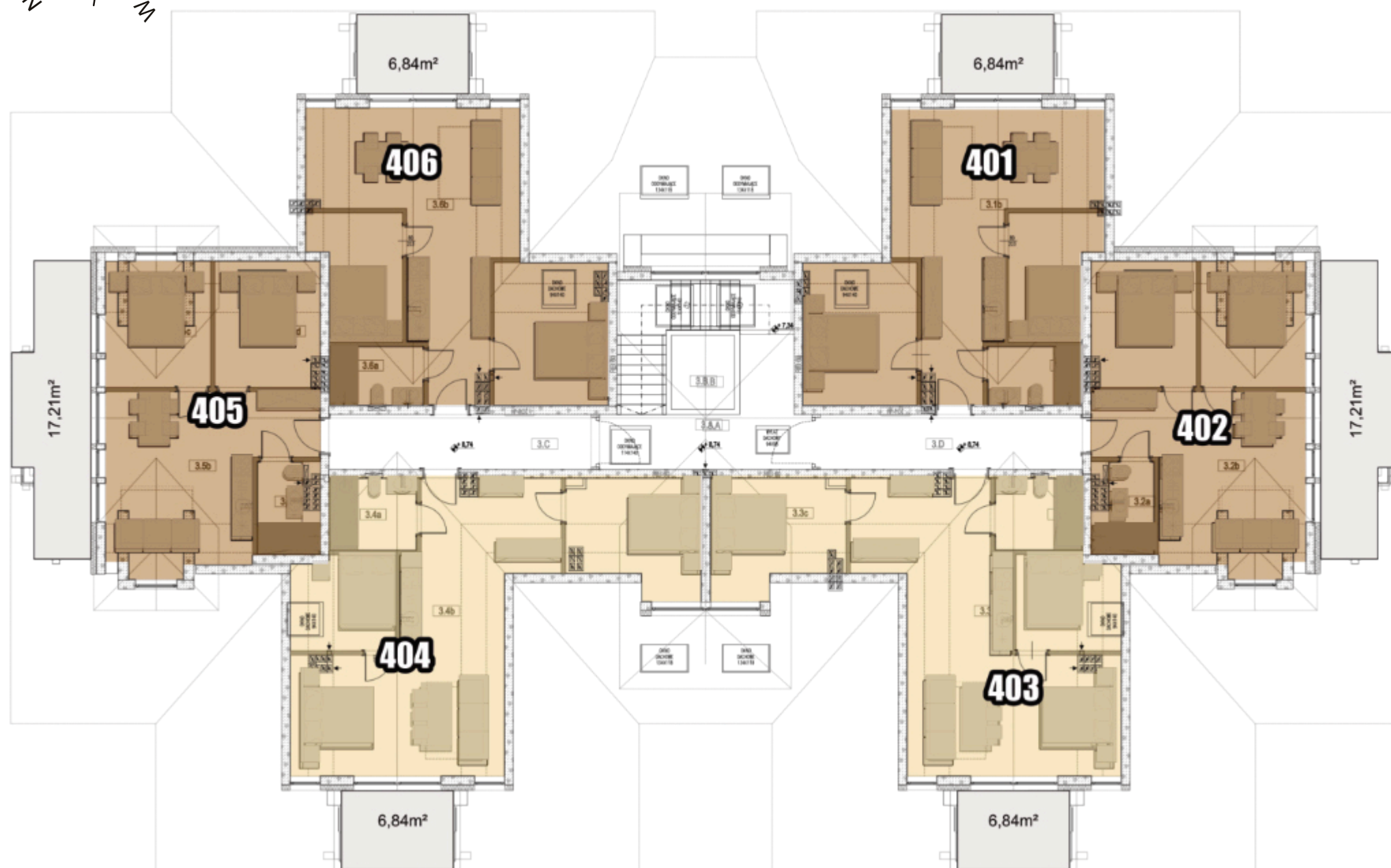
Each apartment offers:

- A well-equipped kitchenette
- A comfortable lounge area
- A relaxing bedroom

Elegant wood and stone finishes add timeless charm, while tasteful details create a warm, intimate atmosphere.

You receive a fully finished, turnkey luxury apartment, combining modern design with regional aesthetics, appealing even to the most discerning guests.





## LEVEL 4

### LEGEND:

- Studio
- 1 Bedroom
- 2 Bedrooms
- 2 Bedrooms + bed
- Penthouse

Apartment	usable area	net area
401	45,65	58,84
402	44,42	52,12
403	49,09	64,95
404	50,87	64,89
405	44,42	52,15
406	46,49	58,67
SUM	281,83	351,62

## Tailored to Guests and Investors

Both the apartments and the common areas are finished to a 5-star standard, offering an atmosphere of luxury and comfort throughout the stay.

We use only premium, durable, and functional materials.

Apartment layouts and room configurations are optimized to deliver the best possible return on investment, while also catering to the needs of:

- Families with children
- Couples
- Active tourists and nature lovers

Large balconies and panoramic windows let your guests enjoy spectacular views of the lake and the Tatra Mountains right from their apartment





Here, you're not just buying four walls  
You're investing in a way of life

#### CONTACT AND ADDRESS



St. Piękna 3  
34-440 Kluszkowce



+48 883 800 808



tatrastyle.pl